



Mr.Cafe 咖先生



苏州咖鲜生智能科技有限公司
Suzhou Mr.Cafe Co., Ltd

江苏·苏州·工业园区·唯新路63号10幢10楼
10th Floor, Building 10, No. 63 Weixin Road, Suzhou
Industrial Park, Jiangsu Province
Email:info@mr.cafe
Website:www.mr.cafe
0512-67628268

PRODUCT CATALOG

咖先生2026年度产品手册

ABOUT US

关于我们

Mr.Cafe 咖先生是一个新锐的智能咖啡设备品牌，公司致力于将传统咖啡机产业智能、互联网化，并予以综合运用的智能咖啡设备制造商。

公司以桌面式智能咖啡机为起点的，智能人机交互咖啡机的运营设备+物联网设备制造商，基于云管理“互联网+”咖啡机设备制造公司。

Mr. Cafe is a cutting-edge brand for smart coffee machines. Different from traditional industry, Mr. Cafe is committed to building an intelligent and internet-based coffee machine company.

Starting with desktop smart coffee machines, Mr. Cafe also provides operation systems for self-service smart payment coffee machines, as well as R&D, production and sales for coffee machine peripherals.



A photograph of two young women with long hair sitting at a wooden table in a cafe, laughing and holding coffee cups. The woman on the left is wearing a dark top, and the woman on the right is wearing a patterned sweater. There are two coffee cups on the table, one with latte art. The background is a blurred window.

Honesty
诚信

Struggle
拼搏

Innovate
创新

Share
悦享

Vision 愿景

悦享咖啡风味

Enjoying coffee flavor

Mission 使命

致力于提供高品质咖啡设备，使工作和旅行生活、家庭更方便的享受美味的咖啡

Committed to providing high-quality coffee equipment to make work, travel, and family more convenient to enjoy delicious coffee

OUR TEAM

我们的团队



郝建强 Dowey Hao

咖先生品牌创始人
Founder of Mr. Cafe

中国咖啡智能设备行业领军者
Leading Figure in China's Smart Coffee Equipment Industry

创新理念

怀揣“中国智造”信念，郝建强先生创立高端咖啡品牌【咖先生 Mr. Cafe】，并于2024年荣获“国家高新技术企业”认证。

技术突破

主导研发智能咖啡技术矩阵，构建完整产品生态：

- 商用全自动冲泡器
- 智能协同磨豆机
- 高端智能半自动咖啡机
- 超级自动奶泡机

全球影响

【咖先生 Mr. Cafe】已登陆多个国际顶尖展会，为全球用户提供智能咖啡解决方案。

核心价值

以技术创新重新定义咖啡智能标准

Innovation Philosophy

Driven by the vision of "Intelligent Manufacturing in China," Mr. Dowey Hao founded the premium coffee brand 【Mr. Cafe】， which was awarded the "National High-Tech Enterprise" certification in 2024.

Technological Breakthroughs

Spearheading the development of an intelligent coffee technology matrix to build a comprehensive product ecosystem:

- Commercial Fully-Automatic Brewers
- Intelligently-Synchronized Grinders
- High-End Smart Semi-Automatic Machines
- Advanced Automatic Milk Frothers

Global Impact

【Mr. Cafe】 has been presented at multiple top-tier international exhibitions, delivering intelligent coffee solutions to users worldwide.

Core Value

Redefining smart coffee standards through technological innovation



皇甫立稳 Max Huangfu

咖先生品牌联合创始人、首席技术官
Co-Founder & CTO of Mr. Cafe

皇甫立稳先生（Max）是咖先生品牌的联合创始人兼首席技术官，全面主导咖啡智能设备的硬件架构、软件系统与前沿技术研发。深耕嵌入式系统、物联网与人工智能领域，他致力于通过软硬件深度融合的创新方式，重新定义智能咖啡体验。

作为技术总负责人，他构建了咖先生全系列产品的核心技术架构，涵盖商用全自动咖啡机的智能控制平台、云物联网管理系统及人机交互解决方案。他带领团队实现多项行业突破，包括基于AI的萃取优化算法、远程诊断与运维系统，以及多设备互联的智能协议，显著提升产品稳定性、智能性及用户体验。

在皇甫立稳的前瞻技术布局下，咖先生不仅打造出高性能、高可靠性的产品，更构建了贯穿研发、生产与服务的全链路数字化体系，为品牌持续引领行业创新与成功出海提供了坚实支撑。

他坚信“科技赋能体验”，始终将用户需求融入技术演进脉络，通过软硬件结合的持续迭代，为全球用户带来更便捷、智能与个性化的咖啡生活方式。

Max Huangfu is the Co-Founder and Chief Technology Officer of Mr. Cafe, leading the end-to-end development of hardware architecture, software systems, and cutting-edge technology for smart coffee equipment. With profound expertise in embedded systems, IOT, and AI, he is committed to reshaping intelligent coffee experiences through deeply integrated hardware-software innovation.

As the technical leader, Max has built the core framework for Mr. Cafe's entire product lineup, including smart control platforms for commercial coffee machines, cloud-based IOT management, and human-machine interaction systems. Under his direction, the team has achieved multiple industry breakthroughs—such as AI-powered extraction optimization, remote diagnostics and maintenance, and multi-device communication protocols—greatly enhancing product reliability, intelligence, and user satisfaction.

Under Max's forward-looking technical strategy, Mr. Cafe delivers not only high-performance and reliable products, but also a end-to-end digital technology system that covers R&D, production, and service—enabling the brand to continuously drive industry innovation and expand successfully into global markets.

Guided by the philosophy that "technology empowers experience," he consistently integrates user needs into the evolution of technology. Through continuous iteration of hardware-software integration, Max strives to deliver a more convenient, intelligent, and personalized coffee lifestyle to users around the world.

半自动
咖啡机



**SEMI-
AUTOMATIC**
COFFEE MACHINES

超级全自动
奶泡机



AUTOMATIC
**FOAM
MASTERS**

全自动
咖啡液咖啡机



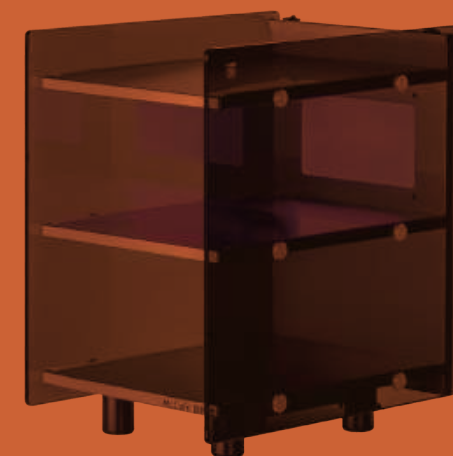
**AUTOMATIC
LIQUID**
COFFEE MACHINES

专业
牛奶冷藏柜



**MILK
COOLERS**

暖杯架



**CUP
WARMERS**

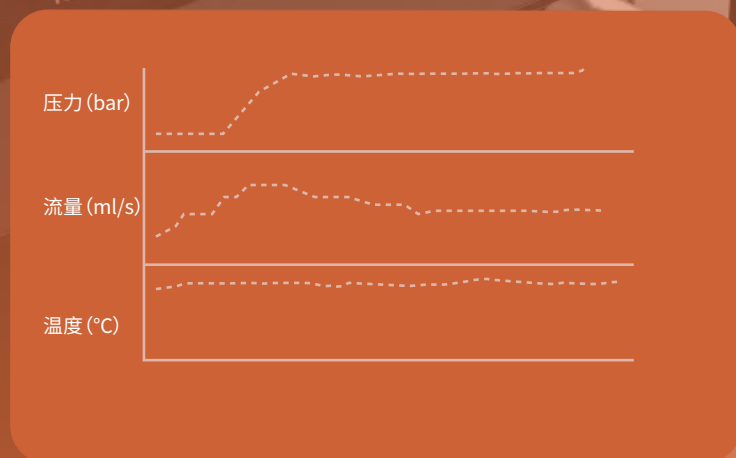


真正的压力读数

Real pressure readings

大多数浓缩咖啡机会告诉您泵的压力，这是没有用的。咖啡粉饼的压力才是您需要知道的，我们是提供它的少数几台机器之一。这些信息对于培养您的咖啡粉饼的认识和准备至关重要。

Most espresso machines will tell you the pressure of the pump, which is useless. The pressure of the coffee puck is what you need to know, and we are one of the few machines that provide it. This information is crucial to developing your coffee puck awareness and preparation.



真正的萃取温度

Real extraction temperature

大多数浓缩咖啡机会告诉您锅炉的水温，这是没用的，接触咖啡粉饼的水温才是萃取温度，我们是实时展现并控制它的少数几台机器之一。水温是萃取品质最关键的因素之一。水温误差值精确到0.1°C；而传统商用咖啡机水温误差值介乎3°C；家用咖啡机水温误差值通常在10°C内。高端咖啡机才能有如此精准的水温控制功能。

Most espresso machines will tell you the water temperature of the boiler, which is useless, the water temperature touching the coffee puck is the extraction temperature, and we are one of the few machines that can display and control it in real time. Water temperature is one of the most important factors of extraction quality. The water temperature error value is accurate to 0.1°C; The traditional commercial coffee machine water temperature error value is within 3°C; Home coffee machine water temperature error value is usually within 10 °C. Only high-end coffee machines have such precise water temperature control.



创新型FTH即热系统 Thermomatic System

E-fast快速全方位过热保护技术，“真”即热厚膜技术，3秒快速加热，快速冷却，且能有效解决水垢问题。可达到A+++欧盟能源评级标准，无须待机，彻底解决耗电问题，有效降低运营成本。

E-fast fast comprehensive overheat protection technology, "true" instant heating thick film technology, 3 seconds fast heating, fast cooling, and can effectively solve scale problems. It can meet the A+++ EU energy rating standard, without standby, completely solve the problem of power consumption, and effectively reduce operating costs.



核心咖啡控制系统

Self-developed core coffee control system

智能控制大屏。创新自研咖啡软硬件系统，可定制大屏物联网远程管理系统，统一化，数据化管理应用。

Smart control screen. Innovative self-developed coffee hardware and software system, can be customized large screen IOT remote management system, unified, data management applications.



99.99%

咖啡原始风味呈现

Coffee original flavor presentation

全自动技术智能化的操控系统赋能半自动出品方式
Automatic technology intelligent control system
enables semi-automatic production



数字化预浸泡系统

Digital pre-infusion system

专家们认为萃取轻度烘焙的咖啡豆最佳方法是在低压情况下，以60秒非常缓慢地完成咖啡粉预浸泡。

Experts believe that the best way to extract lightly roasted coffee beans is to complete a very slow pre-infusion of ground coffee in 60 seconds at low pressure.



渐进式萃取

Progressive extraction

在咖啡萃取过程中，由外而渐进式萃取，水量精准控制，流速更均匀，吸水量更足，萃取均衡，更充分。

In the coffee extraction process, from the outside and progressive extraction, precise water volume control, more uniform flow rate, more water absorption, balanced extraction, more adequate.



高级混合加热奶泡系统 Hybrid Steam-Electric Milk Frothing System

混沌奶泡系统开创者，奶泡丝滑更持久、更香甜。

The pioneer of hybrid milk foam system, milk foam silky longer, more sweet.



一键锅炉换水新鲜系统CWS One-click boiler water fresh system CWS

创新锅炉换水系统，连蒸汽都是新鲜的味道。

Innovative boiler water change system, even the steam is fresh.



一键全自动深度保养 One-click automatic deep maintenance

轻轻一按，咖啡机即可自动进入深度保养模式，无需用户参与，省时省力。确保每一滴咖啡都能完美释放其独特风味。

With one-click, the coffee machine can automatically enter deep maintenance mode, without user involvement, saving time and effort. Ensure that every drop of coffee perfectly releases its unique flavor.



T70

MRC 专业咖啡机 — 精准 | 高效 | 可靠

MRC Pro Coffee System
Precision | Efficiency | Reliability



模组化设计 Modular System

快速安装，整洁布线，提升操作效率
Quick-setup, organized cables, optimized workflow



AI智控萃取 AI Precision Brew

±0.1°C精准温控，还原咖啡最佳风味
±0.1°C smart control for perfect extraction



双核恒稳系统 Dual Heating

持续高效出杯，无惧高峰客流
Consistent performance, even during peak hours

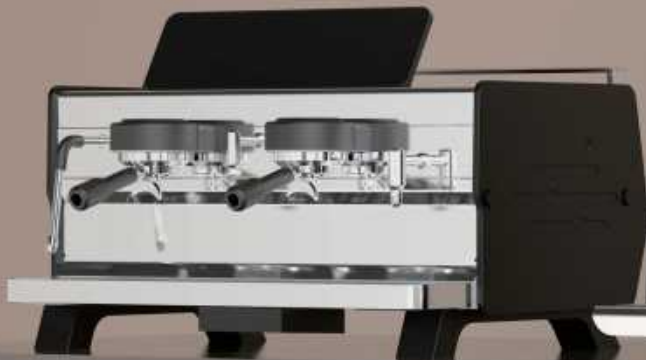


智能数显屏 Live Data Display

实时监控萃取数据，品质一目了然
Real-time tracking for guaranteed quality

MRC半自动咖啡机系列

MRC SEMI-AUTOMATIC COFFEE MACHINE SERIES



S800



S600



S450



S480



S180



S200Plus



H6

MRC H8

MRC H6革命性采用无锅炉纳米厚膜加热技术，实现三秒瞬热与±0.1°C智能精准控温，确保连续出杯性能稳定。按需加热节能环保，结构紧凑释放空间，让您随时高效享受专业级品质咖啡。

The MRC H6 revolutionizes brewing with its boiler-less nano thick-film heater, enabling instant 3 seconds heat-up and ±0.1°C intelligent temperature control for stable performance during continuous use. Its on-demand heating is energy-efficient, while the compact design saves space, allowing you to enjoy professional-quality coffee anytime with ease.

MRC H6/H8

无锅炉纳米厚膜瞬热，智能精准一杯佳韵

Nano Thick-Film Instant Heating, Smart Precision in Every Cup



H6



H8



智能自定义控制

Smart custom control by yourself



可变温冷热水

Variable temperature hot and cold water



慢预浸系统

Pre-infusion System

真实粉饼压力

Authentic Pressure Readings

预注程序观察

Pre-infusion End Detection

定量注水

Volumetric Dosing

型号 Model	H6	H8
奶泡方式Milk foam	专业蒸汽杆 Professional steam wand	专业蒸汽杆 Professional steam wand
萃取压力Brew pressure	无极可变 Stepless variable 1-12Bar	无极可变 Stepless variable 1-12Bar
萃取温度Brew temperature	无极可变 Stepless variable	无极可变 Stepless variable
规格Specification	220-240V 50/60Hz 2400W	220-240V 50/60Hz 2400W
水泵Pump	直流无刷齿轮泵 BLDC Gear pump	直流无刷齿轮泵 BLDC Gear pump
加热方式Heating method	Thermomatic即热+ 600ml Boiler锅炉	Thermomatic即热+ 600ml Boiler锅炉
颜色Colour	睿智黑Black /珍珠白White/太空银Silver	睿智黑Black /珍珠白White/太空银Silver
尺寸Sizes (W*D*H)	260*430*400mm	260*430*400mm
净重/毛重N.W/G.W	21kg/26kg	22kg/27kg

MRC ESONE

多段自由变压萃取和萃取时间停留

Multistages free variable pressure extraction and extraction retention



专业蒸汽杆
Professional steam wand



咖啡和蒸汽独立双锅炉，温度更精准
Coffee and Steam, dual independent boilers, more accurate temperature



单独设置温度
Set the temperature separately

型号 Model	ESONE
奶泡方式Milk foam	专业四孔蒸汽杆 Professional four holes steam wand
萃取压力Brew pressure	无极可变 Stepless variable 1-12Bar
规格Specification	220-240V 50/60Hz 3600W
萃取温度Brew temperature	可变 Variable
咖啡方式Coffee	750ml 锅炉 Boiler
热水温度Water temperature	不可变 Fixed
蒸汽方式Steam	750ml锅炉 Boiler
颜色Colour	睿智黑 Black /象牙白 White/可定制 Customizable
尺寸Sizes (W*D*H)	320*500*500mm
净重/毛重N.W/G.W	32kg/35kg

MRC S180

萃茶和模拟手冲咖啡

Tea brewing and simulate pour-over coffee



一键锅炉换水，蒸汽锅炉可关闭
CWS fresh system, one-click to change water to the boiler, Steam boiler function can be switched off easily



多段自由变压、变温萃取和萃取时间停留
Multistages free variable pressure, variable temperature extraction and extraction retention



可变温冷热水
Variable temperature hot and cold water

型号 Model	S180
奶泡方式Milk foam	专业四孔蒸汽杆 Professional four holes steam wand
萃取压力Brew pressure	无极可变 Stepless variable 1-12Bar
规格Specification	220-240V 50/60Hz 3600W
萃取温度Brew temperature	无极可变 Stepless variable
咖啡方式Coffee	流通式加热器 Thermomatic heater
热水温度Water temperature	无极可变 Stepless variable
蒸汽方式Steam	750ml锅炉 Boiler
颜色Colour	睿智黑 Black /象牙白 White/可定制 Customizable
尺寸Sizes (W*D*H)	320*500*500mm
净重/毛重N.W/G.W	32kg/35kg

MRC S100

一键式超级冷热无水奶泡

One-click automatic hot & cold steamless milk frothing system



一键咖啡锅炉换水，随时清新每一杯咖啡

One-click coffee boiler change water, fresh every cup of coffee at any time



多段自由变压萃取和萃取时间停留

Multistages free variable pressure extraction and extraction retention



慢预浸系统

Pre-infusion system

型号 Model	S100
奶泡方式Milk foam	超级全自动冷热奶泡 Hot&Cold Foamaster
萃取压力Brew pressure	无极可变 Stepless variable 1-12Bar
规格Specification	220-240V 50/60Hz 3600W
萃取温度Brew temperature	可变 Variable
咖啡方式Coffee	750ml 锅炉 Boiler
热水温度Water temperature	不可变 Fixed
颜色Colour	睿智黑 Black /象牙白 White/可定制 Customizable
尺寸Sizes (W*D*H)	320*500*500mm
净重/毛重N.W/G.W	33kg/36kg

MRC S200Plus

一键式超级冷热无水奶泡

One-click automatic hot & cold steamless milk frothing system



多段自由变压、变温萃取和萃取时间停留

Multistages free variable pressure, variable temperature extracion and extraction retention



可变温冷热水

Variable temperature hot and cold water



慢预浸系统

Pre-infusion system

型号 Model	S200Plus
奶泡方式Milk foam	超级全自动冷热奶泡 Hot&Cold Foamaster
萃取压力Brew pressure	无极可变 Stepless variable 1-12Bar
规格Specification	220-240V 50/60Hz 3600W
萃取温度Brew temperature	无极可变 Stepless variable
咖啡方式Coffee	流通式加热器 Thermomatic
热水温度Water temperature	无极可变 Stepless variable
颜色Colour	睿智黑Black /象牙白White/可定制Customizable
尺寸Sizes (W*D*H)	320*500*500mm
净重/毛重N.W/G.W	33kg/36kg

数据化·味觉的全能扩张

Data-Driven Expansion of Taste:
Omnipotence Unleashed

VARIPRESS 变压大师系统

VARIPRESS Variable Pressure Master System

HYBRID FOAMASTER 混动奶泡大师

HYBRID FOAMASTER Hybrid Milk Foam Master

MRC-OS 咖先生智萃系统

MRC-OS Mr. Coffee Smart Extraction System

MRC E23 专业高阶冲泡头

MRC E23 Professional High-End Brewing Head



CAFE MASTER

S480

一键式超级混沌奶泡

One-click Super Hybrid Milk Foam



多段自由变压、变温萃取和萃取时间停留

Multistages free variable pressure extraction and extraction retention



同时配备全自动奶泡系统与专业蒸汽杆，轻松应对各种牛奶加热需求

With fully automatic milk foam system and professional steam wand, it is easy to meet various milk heating needs



流量/压力预设

Flow/Pressure Profiling

真实粉饼压力

Authentic Pressure Readings

预注程序观察

Pre-infusion End Detection

定量注水

Volumetric Dosing

型号 Model	CAFE MASTER S480
奶泡方式Milk foam	专业蒸汽杆+混沌奶沫系统 Professional steam wand+Hybrid milk foam
萃取压力Brew pressure	无极可变 Stepless variable 1-12Bar
规格Specification	220-240V 50/60Hz 3600W
水泵Pump	直流无刷齿轮泵 BLDC Gear pump
加热方式Heating method	独立双锅炉+Thermomatic即热 Dual Independent Boilers +Thermomatic Heater
颜色Colour	睿智黑Black /象牙白White/可定制Customizable
尺寸Sizes (W*D*H)	420*535*480 mm
净重/毛重N.W/G.W	42kg/52kg

适用场景

商业餐饮
Catering

咖啡馆
Café

连锁店
CVS

S450

萃茶和模拟手冲咖啡

Tea brewing and simulate pour-over coffee



多段自由变压、变温萃取和萃取时间停留

Multistages free variable pressure, variable temperature extraction and extraction retention



慢预浸系统

Pre-infusion system



流量/压力预设

Flow/Pressure Profiling

真实粉饼压力

Authentic Pressure Readings

预注程序观察

Pre-infusion End Detection

定量注水

Volumetric Dosing

型号 Model	CAFE MASTER S450
奶泡方式Milk foam	专业四孔蒸汽杆 Professional four holes steam wand
萃取压力Brew pressure	无极可变 Stepless variable 1-12Bar
规格Specification	220-240V 50/60Hz 3600W
水泵Pump	直流无刷齿轮泵 BLDC Gear pump
加热方式Heating method	Thermomatic即热+蒸汽锅炉 Thermomatic instant heating + steam boiler
颜色Colour	睿智黑 Black /象牙白 White/可定制 Customizable
尺寸Sizes (W*D*H)	420*535*480 mm
净重/毛重N.W/G.W	40kg/50kg

S400

多段自由变压萃取和萃取时间停留

Multistages free variable pressure extraction and extraction retention



一键锅炉换水，蒸汽锅炉可关闭

CWS fresh system, one-click to change water to the boiler, Steam boiler function can be switched off easily



慢预浸系统

Pre-infusion system



专业蒸汽杆

Professional steam wand

型号 Model	CAFE MASTER S400
奶泡方式Milk foam	专业四孔蒸汽杆 Professional four holes steam wand
萃取压力Brew pressure	无极可变 Stepless variable 1-12Bar
规格Specification	220-240V 50/60Hz 3600W
萃取温度Brew temperature	可变 Variable
咖啡方式Coffee	750ml 锅炉 Boiler
热水温度Water temperature	不可变 Fixed
蒸汽方式Steam	2.5 L 锅炉 Boiler
颜色Colour	睿智黑 Black /象牙白 White/可定制 Customizable
尺寸Sizes (W*D*H)	420*535*480 mm
净重/毛重N.W/G.W	40kg/50kg


S600

搭载咖啡锅炉与厚膜即热变温双重系统

Equipped with a dual system featuring a coffee boiler and Thermomatic instant heating with variable temperature.



 多段自由变压、变温萃取和萃取时间停留
Multistages free variable pressure, variable temperature extraction and extraction retention

 慢预浸系统
Pre-infusion system

 专业蒸汽杆
Professional steam wand

真实粉饼压力
Authentic Pressure Readings

预注程序观察
Pre-infusion End Detection

定量注水
Volumetric Dosing

型号 Model	CAFE MASTER S600
奶泡方式Milk foam	专业蒸汽杆 Professional steam wand
萃取压力Brew pressure	无极可变 Stepless variable 1-12Bar
规格Specification	220-240V 50/60Hz 3600W
水泵Pump	直流无刷齿轮泵 BLDC Gear pump*2
加热方式Heating method	锅炉 Boiler*3
颜色Colour	睿智黑 Black/ 象牙白 White / 可定制 Customizable
尺寸Sizes (W*D*H)	580*520*485mm
净重/毛重N.W/G.W	52kg/62kg


S800

超级混动·全自动冷热奶泡，行业首创

Equipped with Original & Pioneering Super Hybrid Hybrid FOAMASTER INSIDE



 多段自由变压和萃取时间停留
Multistages free variable pressure extraction and extraction retention

 慢预浸系统
Pre-infusion system

 专业蒸汽杆
Professional steam wand

真实粉饼压力
Authentic Pressure Readings

预注程序观察
Pre-infusion End Detection

定量注水
Volumetric Dosing

型号 Model	CAFE MASTER S800
奶泡方式Milk foam	专业蒸汽杆+混沌奶沫系统 Professional steam wand+Hybrid milk foam
萃取压力Brew pressure	无极可变 Stepless variable 1-12Bar
规格Specification	220-240V 50/60Hz 5500W
水泵Pump	直流无刷齿轮泵 BLDC Gear pump*2
加热方式Heating method	锅炉*3+ Thermomatic即热 Boiler*3+Thermomataic Heater
颜色Colour	睿智黑 Black/ 象牙白 White / 可定制 Customizable
尺寸Sizes (W*D*H)	788*577*515mm
净重/毛重N.W/G.W	52kg/62kg

X65

磨豆机

Coffee Grinder



智能设备联动 Smart Machine Sync

与半自动咖啡机无缝协同，磨粉完成自动触发萃取

Seamlessly integrates with your espresso machine to automate the workflow from grind to brew



智能瞬称研磨技术 Instant Grind Weighing Tech

0.2克精准计量，为稳定萃取奠定基础

Delivers absolute dosing accuracy ($\pm 0.2g$) as the foundation for a perfect shot



AI自适应研磨 Adaptive Grind Control

实时监控萃取品质，自动微调研磨度，确保每一杯都是黄金出品

Utilizes real-time extraction feedback to automatically calibrate the grind size, guaranteeing optimal flavor and unmatched consistency



全自动奶泡机

AUTOMATIC MILK FOAM

Foamaster [Under-counter]

一键冷热奶沫/冷奶盖/超级全自动奶泡机

Foamaster is a fully automatic milk foam with one-click hot & cold milk foam, milk cap and milk



无水发泡
Dry frothing



泵内发泡
Automatic frothing



一键冷热奶沫
One-click hot/cold
milk foam



DC齿轮奶泵
DC milk gear pump



免接触隔离杠杆阀
Contactless isolation
lever valve



7寸屏幕
7" Screen



咖啡馆
Café



机械臂咖啡
Robotic Coffee



面包房
Bakery



商业餐饮
Catering



办公室
Office

适用场景

型号 Model	Foamaster Under-counter
出品速度 Beverage speed	13ml/s
日建议出杯 Advised daily output	300
功率 Rated power (W)	3400W
电压 Rated voltage & frequency	220-240V 50/60HZ
加热方式 Heating method	纳米厚膜*2 Thermomatic nano thick film heater*2
颜色 Colour	睿智黑 Black / 极光银 Silver
台面主机尺寸 Sizes (W*D*H)	190*280*350mm
台下主机尺寸 Built-in Sizes (W*D*H)	254*362*145mm
净重/毛重 N.W/G.W	12kg/14kg

CAFE MATE

一键丝滑冷热奶泡&强力四孔专业电控蒸汽

CAFE MATE is a fully automatic milk foam machine with one-click silky hot and cold milk foam, milk cap and milk, and strong professional four holes electronic control steam



- 丝滑冷热奶泡
Silky hot and cold milk foam
- 专业电控蒸汽杆
Professional electronic control steam rod
- BLDC专业奶泵
BLDC Professional milk pump
- 隔离杠杆电磁阀
Isolation milk lever valve
- 高频气阀
High frequency air valve
- 专业超大蒸汽锅炉
Professional super large steam boiler

CAFE MATE

一种牛奶+专业蒸汽杆
A milk + professional steam wand

CAFE MATE PRO

两种牛奶+专业蒸汽杆
Two kinds of milk + professional steam wand

型号 Model	CAFE MATE
出品速度Beverage speed	16ml/s
日建议出杯Advised daily output	400
功率Rated power(W)	3600W
电压Rated voltage&frequency	220-240V 50/60Hz
加热方式Heating method	2.5L锅炉+进口厚膜加热器 2.5L boiler + Thermomatic Heater
颜色Colour	睿智黑 Black / 极光银 Silver
尺寸Sizes (W*D*H)	200*420*470mm
净重/毛重N.W/G.W	23kg/25kg

M20Pro

一键冷热奶沫/冷奶盖/超级全自动奶泡机

Milk Master is a fully automatic milk foam with one-click hot & cold milk foam, milk cap and milk



- 一键冷热奶沫
One-click hot & cold milk foam
- 智能大屏
7-inch large screen
- 专业超大锅炉
Instant heating heater FTH XL
- 专业奶泵
Milk gear pump
- 隔离杠杆电磁阀
Isolation milk leave valve
- 高频气阀
High frequency air valve

M20 Pro

配置两种独立奶路牛奶系统
Two flavors of independent milk system

型号 Model	M20 Pro
出品速度Beverage speed	15ml/s
日建议出杯Advised daily output	350
功率Rated power(W)	3200W
电压Rated voltage&frequency	220-240V 50/60HZ
加热方式Heating method	进口厚膜加热器/NTC控温 Flow Through Heaters
颜色Colour	睿智黑 Black / 极光银 Silver
尺寸Sizes (W*D*H)	240*500*450mm
净重/毛重N.W/G.W	19kg/21kg

M08Pro

一键冷热奶沫/冷奶盖/超级全自动奶泡机

Milk Master is a fully automatic milk foam with one-click hot & cold milk foam, milk cap and milk



- 一键冷热奶沫
One-click hot & cold milk foam
- 智能大屏
7-inch large screen
- 专业超大锅炉
Instant heating heater FTH XL
- 专业奶泵
Milk gear pump
- 隔离杠杆电磁阀
Isolation milk leave valve
- 高频气阀
High frequency air valve

M08 Pro 标准版:一种牛奶系统
Standard version:only one flavor of milk function

M09 Pro 标准版:一种牛奶系统+三种糖浆系统
Standard version: one flavor of milk function+three flavors of syrups function

型号 Model	M08Pro/M09Pro
出品速度Beverage speed	15ml/s
日建议出杯Advised daily output	350
功率Rated power(W)	3200W
电压Rated voltage&frequency	220-240V 50/60HZ
加热方式Heating method	进口厚膜加热器/NTC控温 Flow Through Heaters
颜色Colour	睿智黑 Black / 极光银 Silver
尺寸Sizes (W*D*H)	240*500*470mm
净重/毛重N.W/G.W	19kg/21kg

Foamaster

一键冷热奶沫/奶盖/超级全自动奶泡机

Foamaster is a fully automatic milk foam with one-click hot and cold milk foam, milk cap and milk



- 一键冷热奶沫
One-click hot & cold milk foam
- 智能大屏
7-inch large screen
- 专业超大锅炉
Instant heating heater FTH XL
- 专业奶泵
Milk gear pump
- 隔离杠杆电磁阀
Isolation milk leave valve
- 高频气阀
High frequency air valve

Foamaster 1S 标准版:一种牛奶系统
Standard version:only one flavor of milk function

Foamaster 2S 配置两种牛奶系统
Two flavors of milk function

Foamaster 3S 配置三种牛奶系统
Three flavors of milk function

型号 Model	Foamaster 1S/2S/3S
出品速度Beverage speed	13ml/s
日建议出杯Advised daily output	300
功率Rated power(W)	3400W
电压Rated voltage&frequency	220-240V 50/60Hz
加热方式Heating method	进口厚膜加热器/NTC控温 Flow Through Heaters
颜色Colour	睿智黑Black / 象牙白 White
尺寸Sizes (W*D*H)	200*420*450mm
净重/毛重N.W/G.W	12kg/14kg

STONE

蒸汽奶泡机 Auto Steamer



0.9mm四孔防烫专业蒸汽杆

0.9mm*4-hole heat-resistant professional steam wand



可设置温度(120~130°C)强力高温蒸汽 轻松实现高效顺滑的奶泡打发

Adjustable (120~130°C) High-Power Steam Effortless Smooth & Efficient Milk Frothing



4.3寸高清大屏:针对不同杯量多个时间蒸汽设置, 一键轻松打发不同温度奶泡

4.3-Inch HD Screen Coffee Maker:
Multi-time steam settings for different cup sizes
.One-Click Multi-Temp Milk Frothing



750ml.1700W大容量大功率专业不锈钢 蒸汽锅炉键轻松换水、除垢, 新鲜每一杯

750ml large capacity, 1700W high-power professional stainless steel steam boiler. One-click water change, descaling for fresh every cup



专业长寿命电磁阀

Professional long-life solenoid valve



高压专业补水电磁泵

High-pressure water replenishment solenoid pump



型号 Model	STONE
电压功率 Voltage/power	220V-240V 50/60Hz 1700W
供水方式 Water Supply	外接水源 External water source

全自动 咖啡液咖啡机

AUTOMATIC COFFEE LIQUID MACHINES

风味大师系统 FLAVOR MASTER

一键制作风味咖啡，可自定义焦糖、香草、桂花、蔗糖、榛果拿铁、香草玛奇朵、蔗糖美式...

One-click to make flavored coffee, can customize caramel, vanilla, osmanthus, sucrose Hazelnut latte, vanilla Macchiato, Sugar American...



商业餐饮
Catering



办公室
Office

适用场景

C系列 Series

一键使用咖啡液制作意式，美式，拿铁，卡布奇诺等咖啡饮品

C Series is a fully automatic coffee liquid machine with one-click coffee concentrate to make espresso, americano, latte, cappuccino and other coffee beverages



牛奶 / 咖啡液 / 茶液 Milk/Coffee/Tea

MILK MASTER 超级奶泡系统与优质新鲜的液态烘焙咖啡&新鲜萃取的浓缩茶浆相互融合轻松制作一杯优质的牛奶咖啡或奶茶饮品。

The MILK MASTER Super Foam system is combined with high-quality fresh liquid roasted coffee and freshly extracted concentrated tea pulp to create a high-quality milk coffee or milk tea drink.

三种风味糖浆果露加料站 Three kinds of flavored syrup feeding station

FLAVOR MASTER三种风味糖浆果露全自动独立加料站，可以在饮品中全自动添加所需风味糖浆果露。

FLAVOR MASTER three kinds of flavor syrup automatic independent feeding station, can automatically add the desired flavor syrup to the drink.

丰富饮品 冷热随心 Enrich drinks hot and cold as you like

预设32款饮品，可以自行更改饮品配置，饮品温度可调水温可以自行设定，每一杯可以不同，饮品可以冷热，并且可以自行设置温度。

Preset 32 drinks, you can change the drink configuration, drink temperature adjustable water temperature can be set, each cup can be different, drinks can be hot and cold, and you can set the temperature.

型号 Model	C10 Pro	C20 Pro
电压功率 Voltage power	220-240V~3200W	220-240V~3200W
产能 Capacity	300 杯/小时 Cup/h	300 杯/小时 Cup/h
最高温度 Tmax	牛奶奶泡75°C Milk foam	牛奶奶泡75°C Milk foam
饮品配置 Beverage	冷热奶泡+咖啡液或茶液+冷热水 Hot and cold milk foam + coffee / tea liquid + hot and cold water	冷热奶泡奶盖+咖啡液或茶液+ 冷热水+2种风味糖浆 Hot and cold milk foam+coffee/tea liquid+hot and cold water+2 flavored syrup
屏幕尺寸 Screen	7寸触屏 7 inch touch screen	7寸触屏 7 inch touch screen
水压范围 Pressure	最大 Max 300KPa(3Bar)	最大 Max 300KPa(3Bar)
尺寸 Sizes(W*D*H)	240*500*470mm	240*500*470mm
净重/毛重N.W/G.W	19kg /21kg	20kg /22kg

压缩机制冷冰箱

COMPRESSOR TYPE
MILK COOLERS



MC-10

MC-12

MC-16

MC-18

精准恒温控制，超高品质，超高稳定性

Precise and constant temperature control, ultra-high quality and stability

更大容量，压缩机高效制冷，牛奶长效保鲜

Larger capacity, compressor efficient refrigeration, keep long-lasting milk fresh

各大型连锁企业首选品牌

The preferred brand of large chain catering enterprises

型号 Model	MC-10	MC-12	MC-16	MC-18
容量 Capacity	12L	12L	18L	21L
外部宽深高 External (W*D*H)	248*450*420mm	248*450*470mm	248*450*560mm	285*515*470mm
内部宽深高 Internal (W*D*H)	185*215*330mm	185*215*330mm	185*215*460mm	205*360*285mm
箱体高度 Height of Milk Cooler	400mm	430mm	530mm	450mm
选配奶盒 Optional milk carton	5L/8L	5L/8L	5L/8L	5L/8L
电压功率 Voltage power	220-240V 70W	220-240V 70W	220-240V 70W	220-240V 70W

半导体制冷冰箱

ELECTRONIC SEMICONDUCTOR
MILK COOLERS



MC-6E

MC-8E

电子风冷，超高品质，超高稳定性

Electronic air-cooled, ultra-high quality and stability

更大容量，牛奶保鲜时间更久

Larger capacity and keep long-lasting milk fresh

办公租赁，酒店投放等性价比之选产品

The preferred cost-effective products for office leasing, hotel placement, etc.

型号 Model	MC-6E	MC-8E
容量 Capacity	18L	23L
外部宽深高 External W*D*H	258*510*380mm	258*510*470mm
内部宽深高 Internal W*D*H	185*330*310mm	185*330*350mm
箱体高度 Box height	360mm	440mm
选配奶盒 Optional milk carton	5L/8L	5L/8L
电压功率 Voltage power	220-240V 70W	220-240V 70W

冰箱暖杯架一体机

MILK COOLER WITH CUP WARMER

MC-10H

智能炫彩氛围灯光，全自动/手动切换颜色
Intelligent colorful ambient light, automatic or manual switch color

精准恒温控制，超高品质
Precise and constant temperature control, ultra-high quality and stability

12L容量，压缩机高效制冷，牛奶长效保鲜

12L capacity, compressor efficient refrigeration, keep long-lasting milk fresh



全金属机身，定制外观颜色

304 stainless steel cup holder laminate, all-metal body, the color of the outlook can be customized

自动控温，双层加热

Aluminum foil heating system, automatic temperature control, two heater layers

型号 Model	MC-10H
灯光控制 Lighting control	按键调光+自动调光 Button & Automatic dimming
电压功率 Voltage/power	110V~220V 50-120W
加热层数 Heater layer	两层 Two Layers
材质 Material	钢化玻璃+304不锈钢 Tempered glass +304 stainless steel
容量 Capacity	约30~60个(视杯子大小) About 30~60 cups
尺寸 Sizes(W*D*H)	350*436*585 mm
净重/毛重 N.W/G.W	27kg/30kg
外观专利 Appearance patent	202221132116

暖杯架 Cup warmer

MC-10C

智能炫彩氛围灯光，全自动/手动切换颜色

Intelligent colorful ambient light, automatic or manual switch color

304不锈钢杯架层板，全金属机身，可以定制外观颜色

304 stainless steel cup holder laminate, all-metal body, the color of the outlook can be customized

铝箔加热系统，自动控温

Aluminum foil heating system, automatic temperature control



银色

MC-20C/30C

智能炫彩氛围灯光，全自动/手动切换颜色

Intelligent colorful ambient light, automatic or manual switch color

304不锈钢杯架层板，高级钢化安全玻璃

304 stainless steel cup holder laminate, advanced tempered safety glasses

铝箔加热系统，自动控温

Aluminum foil heating system, automatic temperature control



透明 白色 黑色

型号 Model	MC-20C/30C	MC-10C
灯光控制 Lighting control	按键调光+自动调光 Button & Automatic dimming	
电压功率 Voltage/power	110V~220V 50-120W	
加热层数 Heater layer	三层 Three layers (MC-20C 两层 Two layers)	
材质 Material	钢化玻璃+304不锈钢	
容量 Capacity	约30~60个(视杯子大小) About 30~60 cups	
尺寸 Sizes(W*D*H)	310*420*470mm	248*355*365mm
净重/毛重 N.W/G.W	19kg/21kg	10kg/11kg
外观专利 Appearance patent	202220686869	202330046784

辅件 Auxiliary parts



5L奶盒

5L Milk container



8L奶盒

8L Milk container

清洁品 Cleaning product



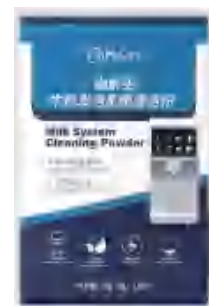
咖啡机清洁片

Coffee machine
Cleaning tablet



咖啡机除垢粉

Coffee machine
descaling cleaning
powder



牛奶发泡系统清洁粉

Milk system cleaning powder

